



Aluminum Gangways

-OWNER'S MANUAL-

TABLE OF CONTENT

ECONO GANGWAY FRAMES	P.2
REGULAR GANGWAY FRAMES	P.2
GANGWAY HANDRAILS	P.3
GANGWAY FLOOR PANNELS	P.4
GANGWAY REINFORCEMENT	P.4
DEPARTURE ANGLES	P.5
PIVOTING EARTH ANCHORS	P.5
CANDOCK HINGES	P.6
SLIDERS FOR GANGWAYS AND TRANSIT PLATES	P.7
ROLLERS FOR GANGWAY	P.7
HDPE RECEPTION PLATES	P.8
HEAVY DUTY RECEPTION PLATE (STAINLEE STEEL OR ALUMINUM)	P.9
TRANSITION PLATES	P.9
SPECS OF GANGWAYS	P.10
CONCRETE SHIELD SPECIFICATIONS	P.11

***** Note that it is preferable to consult the manual on a COLORED printed version, or directly on your computer screen*****

IMPORTANT NOTICE

-A gangway must never be anchored at both extrimities. If the later is securely anchored to its shore end, the off-shore end must be left un-anchored to prevent any damages during storms or extraordinary eventes and vice-versa.

-If using a gangway that is 20 feet or more, always use re-infrocements OR handrails to create a stiffer assembly.

-The shore side anchor point of any given gangway must always be higher than the off-shore part of the gangway, regardless of the water level.

-To keep a moderate down slope of the gangway, the lenght of any given gangway must always be at least 3 TIMES longer than the difference between the water level and shore level at the lowest possible tide.

ECONO GANGWAY FRAMES



Material/Composition :
 Aluminum 6005 T-61

Dimensions :
 Beams: 3" x 1"

APPLICATIONS

Candock's **ECONO GANGWAY** line of product is designed for optimal efficiency at the very best price there is. These gangways are designed for residential usage. They are light weight, aesthetic and easy to manipulate. They come in various sizes (4, 8 or 12 ') and can be equipped with most of our gangway accessories. Being made of lighter grade aluminum beams, their load capacity is limited to non-commercial use. For complete specifications, please see chapter [SPECS OF GANGWAYS](#).

**Custom fabrication service is also at your disposal, simply ask your Candock distributor.

REGULAR GANGWAY FRAMES



Material/Composition :
 Aluminum 6005 T-61

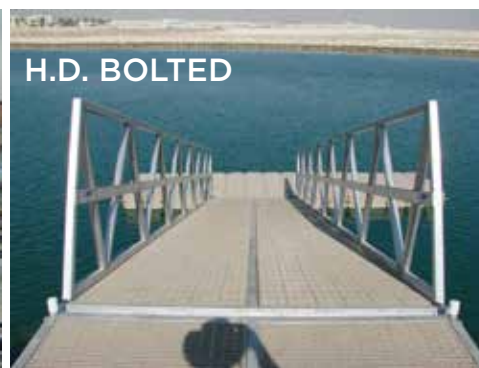
Dimensions :
 Beams:
 -2" x 4" for gangways <= 12'
 -2" x 5" for gangways > 12'

APPLICATIONS

Candock's **REGULAR GANGWAY** line of product is designed for optimal strenght and rigidity regardless of the lenght or application of the gagway. These gangways are designed to residential, commercial or industrial usage. They are light weight, aesthetic and as sturdy as they can be. They come in various sizes (from 12' to 32' +) and can be equipped with all of our gangway accessories. Being made of stronger grade aluminum beams, their load capacity is higher thus ideal for commercial and industrial use. For complete specifications, please see chapter [SPECS OF GANGWAYS](#).

**Custom fabrication service is also at your disposal, simply ask to your Candock distributor.

GANGWAY HANDRAILS (REGULAR OR HEAVY DUTY / WELDED OR REMOVABLE)



Material/Composition :
 Aluminum 6005 T-61

Dimensions :
 Height: 42"
 Length: Various
 Beams:
 Regular: 2"x1" and 12 by 1"
 Heavy duty: 2" by 2"

APPLICATIONS

Candock's **GANGWAY HANDRAIL** line of product is designed for optimal efficiency, sturdiness and safety of our gangways. These handrails are destined for residential, commercial or industrial usage where optimal rigidity and safety of **GANGWAYS** is required. They are light weight, aesthetic and as sturdy as they can be. They come in various sizes and can be married with all of our **GANGWAY** models. Adding a tremendous amount of strength to any **GANGWAY** it is paired with. Their addition is noticeably increasing **GANGWAYS** load capacity thus ideal for commercial and industrial use. For complete specifications when added to **GANGWAYS**, please see chapter **SPECS OF GANGWAYS**.

*Make sure to specify your needs to your Candock distributor as welded models are slightly cheaper compared to the removable ones that, on the other hand, they are greatly cheaper to transport as they take much less space in shipping trucks and containers.

**Custom fabrication service is also at your disposal, simply ask to your Candock distributor.

ASSEMBLY PROCEDURE

If using the "BOLTED" version of our handrail, simply assemble the handrail to the gangway using supplied hardware into the pre-drilled holes.

GANGWAY FLOOR PANNELS



Material/Composition :
 fiber reinforced plastic

Dimensions :
 3' : 3'x1'x1 1/4"
 4' : 4'x1'x1 1/4"
 5' : 5'x1'x1 1/4"

APPLICATIONS

Candock's **GANGWAY FLOOR PANNELS** consist of premium quality, non-slip, openwork design plastic panels. Made with top of the line FRP plastic, they are extremely durable and perfectly adapted for residential and commercial use. Some "industrial" flooring are also available upon request, simply ask you Candock distributor for more information.

ASSEMBLY PROCEDURE

If pannels are not pre-assembled by Candock, simply lay the pannels on the GANGWAY, pre-drill a hole (3/16") at every corner of every pannels into the aluminum frame tab prior to screwing the provided stainless steel screws in place with a mini impact drill. Do not over tight the screws to prevent any damage to the pannels.

GANGWAY REINFORCEMENTS



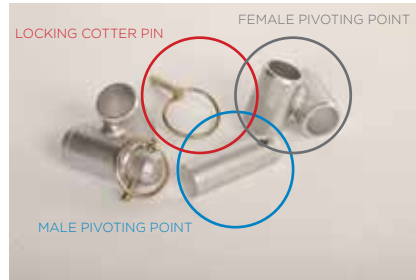
Material :
 Aluminum

Particularities :
 Always pre-assembled

APPLICATIONS

Adding a tremendous amount of strenght to any **GANGWAY** it is paired with. Their addition is noticably increasing **GANGWAYS** load capacity thus ideal for commercial and industrial use. For complete specifications when added to GANGWAYS, please see chapter **SPECS OF GANGWAYS**.

PIVOTING EARTH ANCHORS (ONLY FOR ECONO FRAMES)



Material/Composition :

Aluminum

Models :

Bolted or welded

APPLICATIONS

Candock's **EARTH PIVOTING ANCHORS** for **GANGWAY** are the very best way to secure the "shore end" part of your gangway when the shoreline is covered with grass, weeds or other vegetation carpetings. Indeed, it will securely hold the gangway in place but it will also allow an average water level variation without compromising its sturdiness.

ASSEMBLY PROCEDURE

1-If "BOLTED" model is being used, start by fixing the part of the anchors that is meant to go on the **GANGWAY**. Using proper tools and hardware, securely fasten the pivoting point on the **GANGWAY**.

2-Again, using suitable earth stake and tools, securely drive the stake through the female part that should be already fixed to the male part and "female" pivoting bracket into the ground (when dismantled from the **GANGWAY**) to the designated location. Make sure the assembly is secure and strong to guarantee a durable installation.

DEPARTURE ANGLES (BOLTED OR WELDED)



Material/Composition :

Aluminum

UHMW bushings

Models / dimensions :

3' Econo (bolted or welded)

4' Econo(bolted or welded)

5' Econo (bolted or welded)

3' Regular (bolted or welded)

4' Regular (bolted or welded)

5' Regular (bolted or welded)

3' Heavy Duty (bolted or welded)

4' Heavy Duty (bolted or welded)

5' Heavy Duty (bolted or welded)

APPLICATIONS

The departure angle (starting angle) is a system allowing you to fasten a **GANGWAY** to a fixed structure though allowing it to follow water level variations. It is designed to be used with all of our **GANGWAY** models and is available in multiple sizes and models.

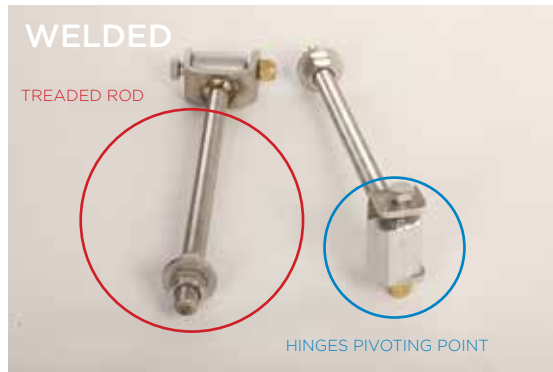
ASSEMBLY PROCEDURE

1-If "BOLTED" model is being used, start by fixing the part of the hinge that is meant to go on the **GANGWAY**. Using proper tools and hardware, securely fasten the hinge on the **GANGWAY**.

2-Again, using suitable hardware* and tools, securely fasten the "90 degree" angled aluminum piece (when dismantled from the **GANGWAY**) to the designated structure. Make sure the assembly is secure and strong to guarantee a durable installation. If installed against concrete bullnose, we strongly suggest to use specific shields that are featured at the end of this manual. ([page 11](#))

3-While aligning the **GANGWAY** in place, simply insert the hinges rods into the designated bushings to complete installation. Dont forget to slide in the locking cotter pin to secure the whole assembly.

CANDOCK HINGES (ONLY FOR ECONO FRAMES)



Material/Composition :

Aluminum
 Stainless steel

Models :

Bolted or welded

Needed accessories (sold seperately)

2 CANDOCK LUG CONNECTORS
 2 CANDOCK NUTS

Needed tools :

Key for nut
 or
 Ratchet key for nut
 15/16 key wrench



APPLICATIONS

Candock's **HINGES** for **GANGWAY** are a good way to secure the "dock end" part of your gangway when there is no possibility to securely fixe the gangway on the "shore end" part.

ASSEMBLY PROCEDURE

1-If "BOLTED" model is being used, start by fixing the part of the hinges that is meant to go on the **GANGWAY**. Using proper tools and hardware, securely fasten the pivoting point on the **GANGWAY**. Make sure to let proper spacing distance between hinges to respect the configuration of your system (**Either 19" or 38"**, **center to center**)

2-Simply insert the **CANDOCK LUG CONNECTORS** into the cube tabs in accordance with where you placed the hinges on the gangway (19" or 38") Secure by screwing the proper **CANDOCK NUTS** with proper toolings. (**KEY FOR NUT** or **RATCHET KEY FOR NUT**) so that you can center the gangway properly. 19" center should be for ODD number cube width and 38" for even number cubes width. 19" inches centers should only be used with 3' wide gangways. *If in doubt refer your self to the **CANDOCK LUG CONNECTOR** section of the "regular products OWNER'S MANUAL".

3-Insert the Staineless steel "treaded rods" into the **CANDOCK LUG CONNECTOR** prior to firmly secure it with the provided hardware. Make sure to adjust the height of the gangway in order to be parallel and flush with the top of the cubes.

SLIDERS FOR GANGWAYS AND TRANSIT PLATES



Material/Composition :
 HDPE

Models :

- 1 - Econo gangways+transit plates
- 2 - Regular

Particularities :

Always pre-assembled

APPLICATIONS

These sliders are simply there to prevent wear and tear of the dock and/or gangway when the gangway is simply laying on the dock while allowing smooth movements of the gangway with water level variations.

ROLLERS FOR GANGWAYS



Material/Composition :
 Aluminum and PVC

Models :

- 1-Regular
- 2-Heavy duty

Particularities :

Always pre-assembled

APPLICATIONS

These rollers are the most efficient and durable way there is to prevent wear and tear of the dock and/or gangway. Usually paired with a [RECEPTION PLATE](#), their combination is the best solution for commercial and industrial use. It allows smooth movements of the gangway with water level variations.

HDPE RECEPTION PLATE (FOR GANGWAYS OF 20' OR LESS)



Material/Composition :

HDPE (1/2")
 4 or 6 SS "well nuts"

Models / sizes :

1- 48" x 48" x 1/2" / bolted on 4 G2 CONNECTING PINS
 2- 48" x 60" x 1/2" / bolted on 6 G2 CONNECTING PINS

APPLICATIONS

The **HDPE RECEPTION PLATE** is a great addition to prevent wear and tear of the dock and/or gangway while distributing the weight of the gangway on a greater surface. Usually paired with a **SLIDER** or **ROLLER** against the gangway, this combination is the best solution for commercial and industrial use. It allows smooth movements of the gangway with water level variations.

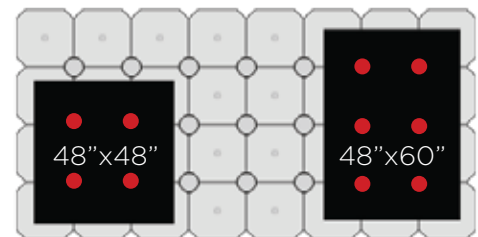
ASSEMBLY PROCEDURE

- 1-Pre-drilled and supplied with proper hardware, the **HDPE RECEPTION PLATE** is ready to be installed in a few quick steps.
- 2-Position the reception plate where needed considering that the plate will sit on either 4 or 6 **G2 CONNECTING PINS**. Using the pre-drilled holes in the plate, drill holes of 1/2" into the center of the G2 CONNECTING PINS.
- 3-Remove the HDPE plate from its final position to insert the female part of the wellnuts into their respective holes.
- 4-Reposition the plate in position and complete installation by screwing the counter sink bolts through the plate, into the "well nuts"



WELL NUTS

The "well nuts" must be as tight as possible into their holes to prevent them from spinning when screwing the bolts in them



HEAVY DUTY RECEPTION PLATE (STAINLESS STEEL OR ALUMINUM) (FOR GANGWAY OF 24' AND UP)



Material/Composition :

Aluminum OR stainless steel (3/8")
 HDPE (1/2")
 SS "well nuts"

Model / size :

Dimensions, specs and costing upon request

APPLICATIONS

The **HEAVY DUTY RECEPTION PLATE** is a great addition to prevent wear and tear of the dock and/or gangway while distributing the weight of the gangway on a greater surface (It also prevents deformation of the cubes surface when subjected to heavy loads.). Usually paired with a **SLIDER** or **ROLLER** against the gangway, this combination is the best solution for industrial use. It allows smooth movements of the gangway with water level variations.

ASSEMBLY PROCEDURE

1-To be given upon request, depending on specs and dimensions of the plate.

TRANSITION PLATE



Material/Composition :

Aluminum 3/32" "diamond plate"
 *Always pre-assembled on gangways.

Model / size :

-3'x16"
 -4'x16"
 -5'x16"

APPLICATIONS

The **TRANSITION PLATE** is a great addition for a smoother transition between the gangway and the dock. Necessarily paired with a **SLIDER FOR TRANSITION PLATE** against its exterior "lip", it prevents wear and tear of the dock. Its addition also offers a smoother access to wheelchairs users and person with reduced mobility.

SPECS OF GANGWAYS

GANGWAY RATING CHART

PRODUCT	SIZE		MAX. LAOD			ADDITIONAL PERSONS ALLOWED IF PAIRED WITH:				
	FEETS	METERS	LBS	KG	PERSONS	Gangway reinforcement	Welded H.R.	Bolted H.R.	H.D. Bolted H.R.	Gangway reinforcement + Bolted H.R.
						RL 50	RL 48	RL 49	RL 218	RL 50 + RL 49
RL88 (ECONO)	3X12	0,91X3,66 EC	828	376	4	n/a	n/a	n/a	n/a	n/a
RL36	3X12	0,91X3,66	3672	1669	18	21	28	29	30	32
RL38	3X16	0,91X4,88	2448	1113	12	16	25	26	28	30
RL40	3X20	0,91X6,07	1560	709	7	12	25	25	28	30
RL42	3X24	0,91X7,32	1008	458	5	10	25	26	29	32
RL44	3X28	0,91X8,53	588	267	3	5	24	24	26	27
RL46	3X32	0,91X9,75	384	175	2	5	26	26	29	30

RL86 (ECONO)	4X12	1,22X3,66 EC	576	262	2	n/a	n/a	n/a	n/a	n/a
RL37	4X12	1,22X3,66	2976	1353	14	18	28	29	31	33
RL39	4X16	1,22X4,88	2112	960	10	15	28	29	32	34
RL41	4X20	1,22X6,07	1360	618	6	13	29	30	34	37
RL43	4X24	1,22X7,32	768	349	3	11	31	32	36	40
RL45	4X28	1,22X8,53	448	204	2	6	30	31	34	35
RL47	4X32	1,22X9,75	166	75	0	5	33	34	37	38

5L159 (ECONO)	5X12	1,52X3,66 EC	420	191	2	n/a	n/a	n/a	n/a	n/a
RL175	5X12	1,52X3,66	1740	791	8	13	25	26	29	31
RL176	5X16	1,52X4,88	1600	727	8	14	30	32	35	38
RL177	5X20	1,52X6,07	1100	500	5	13	34	35	39	43
RL178	5X24	1,52X7,32	756	344	3	13	38	39	44	49
RL179	5X28	1,52X8,53	406	185	2	7	37	38	42	43
RL180	5X32	1,52X9,75	144	65	0	6	41	42	46	48

NOTE: FOR ALL THE ADD ON RESL LTS OF RL50, RL48, RL49 AND RL218, THEY ARE BASED ON WOI SE CASE SCENARIOS, SO IT IS POSSIBLE THAT THE CAPACITIES MIGHT BE HIGHER.

SPECS OF GANGWAYS

WEIGHT OF GANGWAYS (INCLUDING FLOOR PANNELS)

PRODUCT	SIZE		WEIGHT	
	FEETS	METERS	LBS	KG
RL190	3X4 EC	0,91X1,21 EC	36	17
RL34	3X8 EC	0,91X2,42 EC	64	29
RL88	3X12 EC	0,91X3,66 EC	97	44
RL36	3X12	0,91X3,66	123	56
RL38	3X16	0,91X4,88	161	73
RL40	3X20	0,91X6,07	198	90
RL42	3X24	0,91X7,32	245	111
RL44	3X28	0,91X8,53	285	129
RL46	3X32	0,91X9,75	324	147

RL86	4X4 EC	1,22X1,21 EC	46	21
RL86	4X8 EC	1,22X2,42 EC	81	37
RL86	4X12 EC	1,22X3,66 EC	124	56
RL37	4X12	1,22X3,66	150	68
RL39	4X16	1,22X4,88	194	88
RL41	4X20	1,22X6,07	239	109
RL43	4X24	1,22X7,32	295	134
RL45	4X28	1,22X8,53	343	156
RL47	4X32	1,22X9,75	391	178

5L159	5X8 EC	1,52X2,42 EC	96	44
5L159	5X12 EC	1,52X3,66 EC	146	67
RL175	5X12	1,52X3,66	180	82
RL176	5X16	1,52X4,88	235	107
RL177	5X20	1,52X6,07	294	134
RL178	5X24	1,52X7,32	356	162
RL179	5X28	1,52X8,53	413	188
RL180	5X32	1,52X9,75	470	214

PRODUCT	DESCRIPTION	LINEAR WEIGHT	
		LBS/FOOT	KG/METER
RL50	REINFORCING	1,4	2,1
RL48	WELDED HANDRAIL	2,5	3,7
RL49	BOLTED HANDRAIL	3,1	4,6
RL218	H.D. BOLTED HANDRAIL	3,6	8